

DUTCHLAC

PROFESSIONAL DAIRY SOLUTIONS

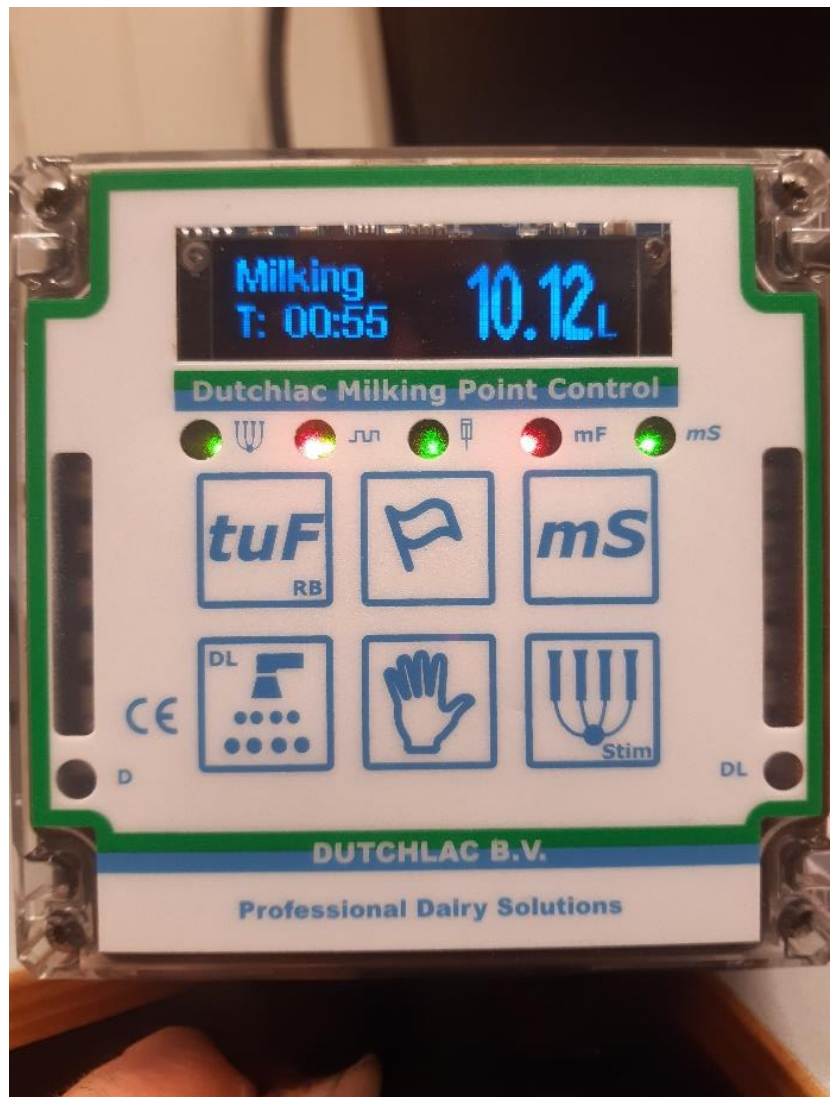
DUTCHLAC PARLOUR ELECTRONICS

Dutchlac presents a full range of parlour electronics which informs the farmer regarding all milkings and corresponding date about the cows. The system consists of the MM30 milk meter with display with an accurate DMM chamber meter, the M5 parlour controller, an individual or a walk-through antenna system for the RFID identification, a sorting system and the Cowculator software.

MM30 MILK METER DISPLAY

The MM30 milk meter includes milk yield measurement, conductivity measurement, milking time, health attention and a top up feed button. It has been designed for doubled up and rotary parlours.

- Simple numeric display of milk yield, milking time and highest conductivity
- 6 Keys – automatic milking, manual milking, washing, conductivity on/off, feed and warning flags
- Bright, graphical LCD display
- 7 LED windows for auto milking, pulsation, ACR, milk flow, conductivity milking, data and dump line
- 2 Windows with multiple LED's graphically displaying conductivity level
- 2 Automatic milking modes: one time-based and one sensor-based cluster removal
- 3 Manual milking modes: ACR disabled, conductivity pull off disabled or both disabled
- Accurate milk yield measurement



DUTCHLAC

PROFESSIONAL DAIRY SOLUTIONS

- Accurate milk flow measurement for ACR
- Full pulsation control
- Pulsation stop (pulsation only on when milking or washing)
- Stimulation pulsation programme
- Programmable washing timer
- User set conductivity warning and pull of levels
- User selectable ACR pull off by milk flow and time
- Milk sweep/purge
- Communication bus enables all MM30 controls to be into milk or wash mode from 1 control and animal data to be send/received from Micro M5 such ass
- Warning flags can be set and acknowledged against each animal using the flag key:
 - If there is colostrum or antibiotic in the milk
 - If previous milking yield is higher or lower than expected
 - If previous conductivity is higher or lower than expected
- Sorting gate control

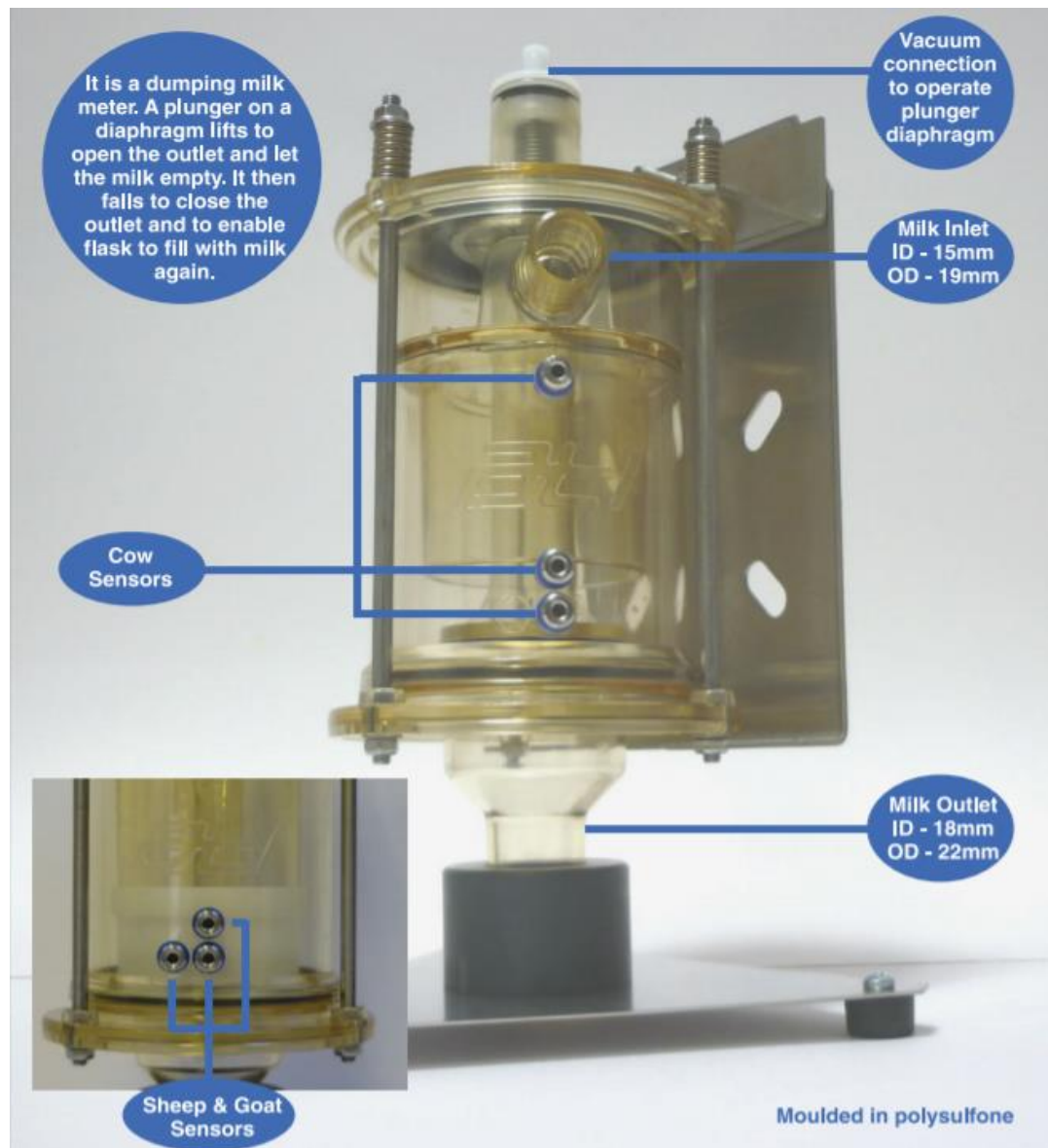


DUTCHLAC

PROFESSIONAL DAIRY SOLUTIONS

DMM MILK METER / FLASK FEATURES

- Manufactured from polysulfone for excellent mechanical strength and chemical and temperature resistance
- Dumping milk meter – plunger on diaphragm lift to open outlet and empty milk when milk reaches the top probe. It then falls to close the outlet and enable the flask to fill with milk again
- Each dump is approximately 200ml
- Milk inlet – 15mm ID, 19mm OD
- Milk outlet – 18mm ID, 22mm OD
- No electronic parts with milk meter – simple design ensures low service costs



DUTCHLAC

PROFESSIONAL DAIRY

The DMM has a separate solenoid box for the dump- and shut-off- valve. The solenoid box is connected to a low level vacuum and low level fresh air line.

In the MM30 we can adjust the calibration settings. There is a stable milk vacuum because the hose between the milk meter and the milk line.



DUTCHLAC

PROFESSIONAL DAIRY SOLUTIONS

M5 CONTROL

The M5 control is a simple and easy to use parlour controller. It uses embedded technology to provide all the functionality and data storage required to run automation systems on herringbone, parallel and rotary milking parlours for cows, sheep and goats.

It connects to a wide range of systems including cluster removers, milk meters, parlour automatic identification, automatic drafting gates, backflush and Cowculator M5 PC software.



DUTCHLAC

PROFESSIONAL DAIRY SOLUTIONS

PARLOUR AUTOMATIC ID SYSTEM

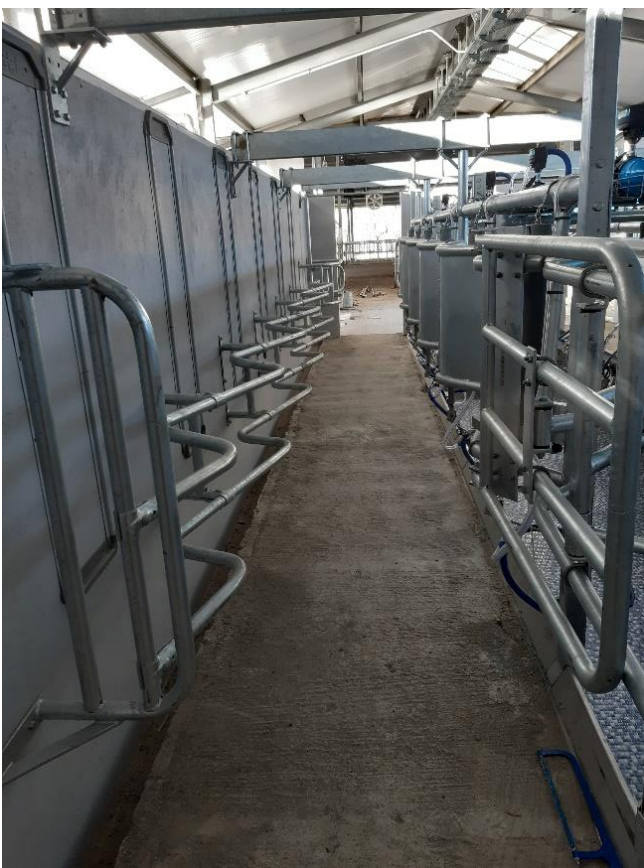
For reliable information and a well-functioning management program, it is necessary the cows are correctly identified in the milking parlour. Dutchlac uses 2 systems: An individual antenna or a walk through antenna system with ear, leg or neck RFID-HDX tags.

INDIVIDUAL ANTENNAS

The individual antenna auto ID system has an antenna at each stall to identify the animals. It is the only way to guarantee that the correct animal is in the right stall, each and every time. For optimal identification the individual antenna system is highly recommendable.

WALK-THROUGH ANTENNAS

The walk-through Auto ID system is a way of identifying animals as they walk through the antenna. Before passing through the antenna the cows need to be lined up, ensuring they are identified one by one in the right order. The walk-through antenna has a unique design with a 3 dimensional identification system (the tag is read from 3 positions).



DUTCHLAC

PROFESSIONAL DAIRY SOLUTIONS

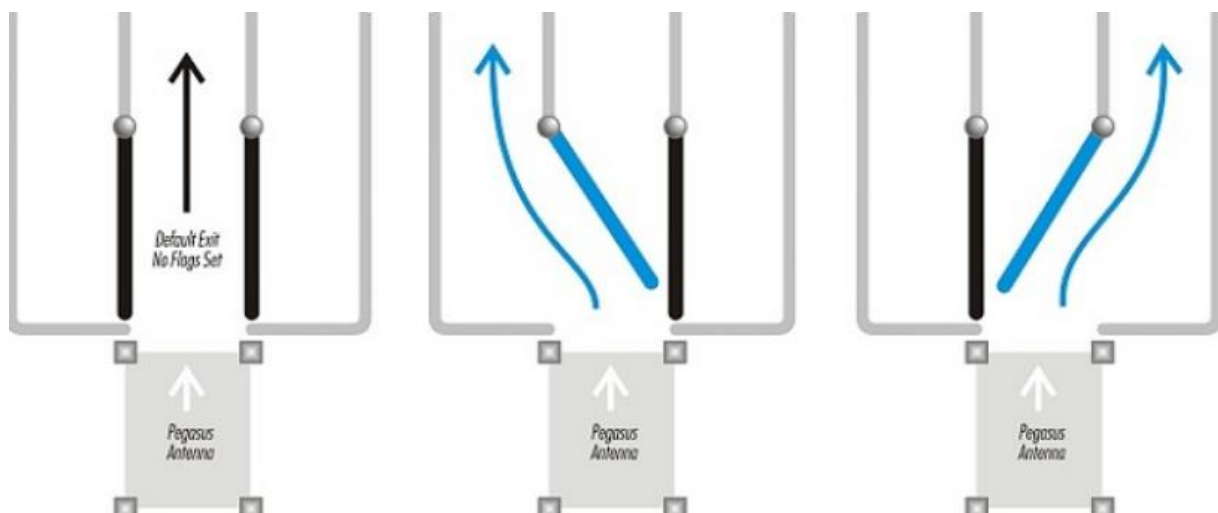
SORTING GATES

This system uses “battery-free” HDX electronic identification (ear) tags. 2-Way and 3-way versions are available as standard, allowing cows to be sorted in two or three directions. More than one drafting gate can be included in the system, allowing cows to be sorted in more than three direction.

This system is completely free-flowing, due to the antenna being able to rapidly and accurately reading tag reads, and therefore less stressful for cows.



Sorting cows can be controlled from the MM30 milk meter or from the M5 controller. It is also possible to control it with the Cowculator software. A “stand-alone” version is available for parlours without MM30 milk meters.

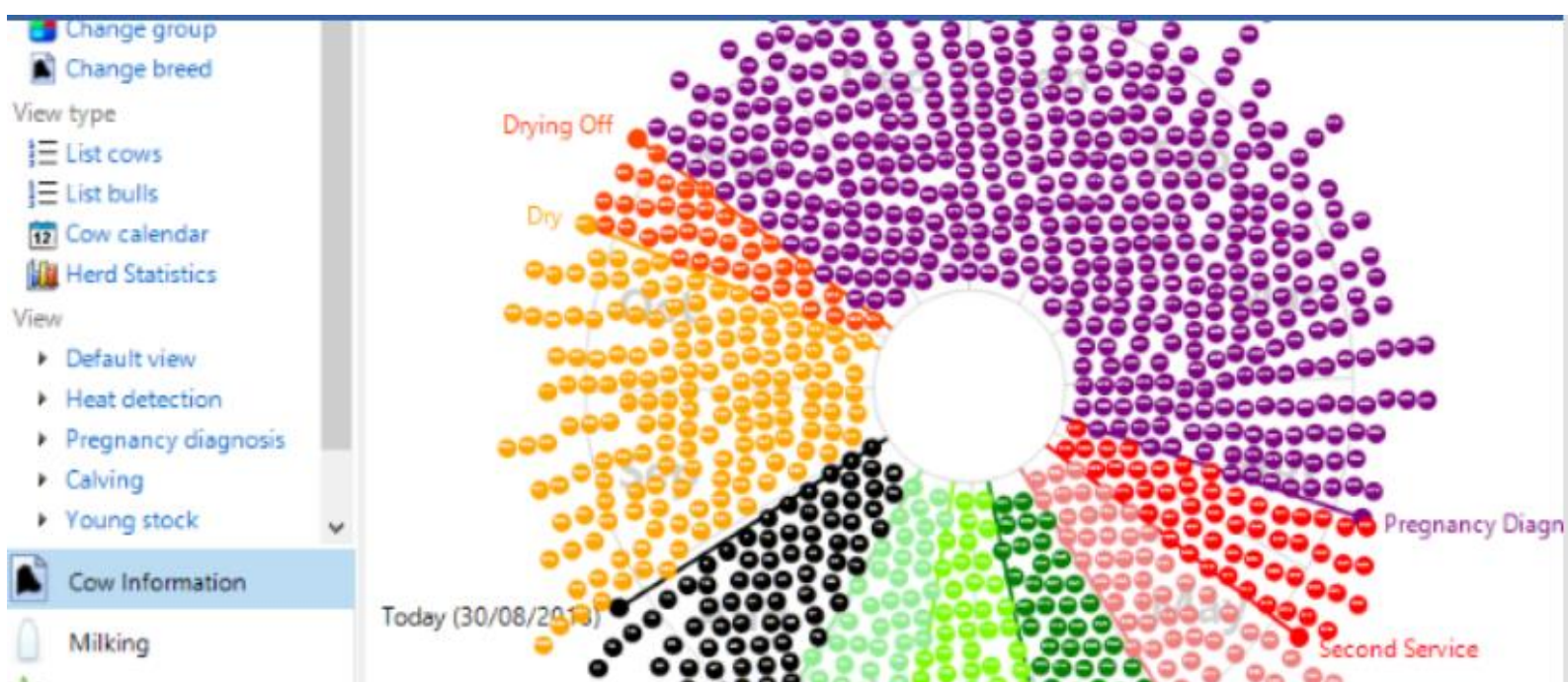


DUTCHLAC

PROFESSIONAL DAIRY SOLUTIONS

COWCULATOR SOFTWARE M5

Cowculator M5 is a user friendly and flexible dairy animal management program designed to help you improve your milking performance. It automatically collects and evaluates data from every animal, allowing you to manage your animals with the most up to date information. It provides complete animal milking and feeding records, helping you to make the best management decisions. Historical data is available for individual animals allowing you to monitor lifetime lactation performance.



The innovative cow calendar allows you to easily check each cows position in the lactation cycle and highlights which cows are not performing.

The software can be uses with cows, sheep and goats.

General features:

- Monitoring milk yields
- Monitoring and control feeding
- Sort cows every milking, once only or by date
- Automatic uploading, downloading and ration calculation at scheduled times each day
- Designed custom reports using the easy to use report designer
-

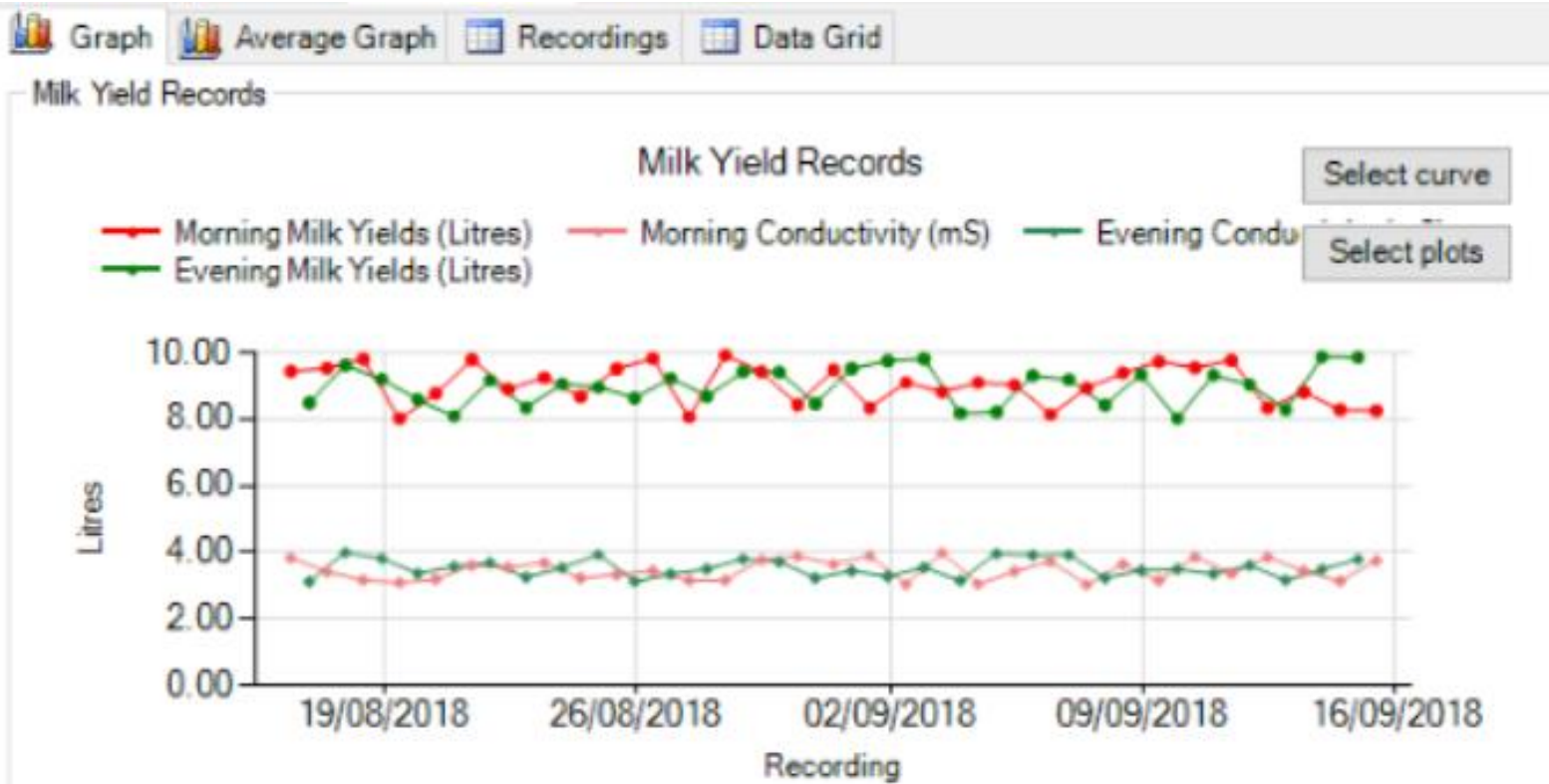
DUTCHLAC

PROFESSIONAL DAIRY SOLUTIONS

- Automatically informs the user when updates to Cowculator are available if the computer is connected to the internet
- Exports data to Uniform and Sum-it software

Milking features:

- Store milking date, milking length, milk yields, conductivity, production rate and stall each number for every milking for the animals entire lifetime
- Graphical data available on yearly, monthly and daily milk totals
- Predicted daily yields highlight and milk yield deviations and possible health issues
- Information available: today's, yesterday's and predicted daily milk yields, newest recordings, production rate, deviation and deviation percentage, lactation total, number of milkings, average production rates and average daily yields
- Comparison of lactations for each animal



DUTCHLAC

PROFESSIONAL DAIRY SOLUTIONS

Feeding features:

- Individual feeding information on in-parlour feeding, out of parlour feeding and the split between the two
- Three simple ration calculations: feed table, feeding to yield and feeding based upon days in milk
- Applied on an individual or group basis and split between parlour and out of parlour feeders
- Yesterdays, todays and predicted daily milk yield used in calculations
- Four stage feeding process: steaming up, lead feeding, ration feeding and drying off
- Our of parlour feeding: graphical display of eaten an uneaten feed, attention for uneaten feed per 24 hours and user selectable number or days, attention for high number of visits and daily feed history

Cow calendar:

- Graphical display of current state of the management of the herd
- Animals are colour coded showing animals due to calve, due for service, pregnancy diagnosis and drying off
- Highlights animals with irregular heat cycles and gives an overview of the calving pattern throughout the year


Animal health features:

- Individual animal records allow simple and effective logging of health issues
- Attentions such as high cell count, mastitis, low yields and foot attention
- Full history of medicine use can be logged against each animal
- Printable animal health and medicine reports available

CONTACT US

If you have any questions or queries we will always be happy to help. Feel free to contact us by telephone or email and we will be sure to get back to you as soon as possible.

Yours faithfully,
Dutchlac BV

 + 31 (0)58 2154 288

 www.dutchlac.nl

 dutchlac@ploegint.nl